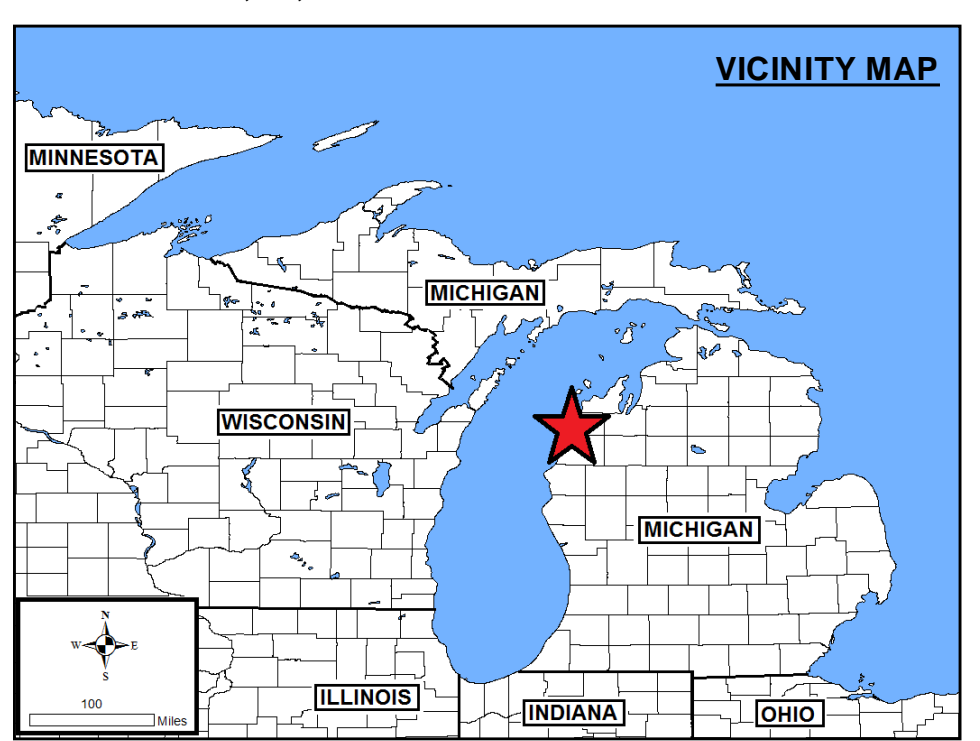
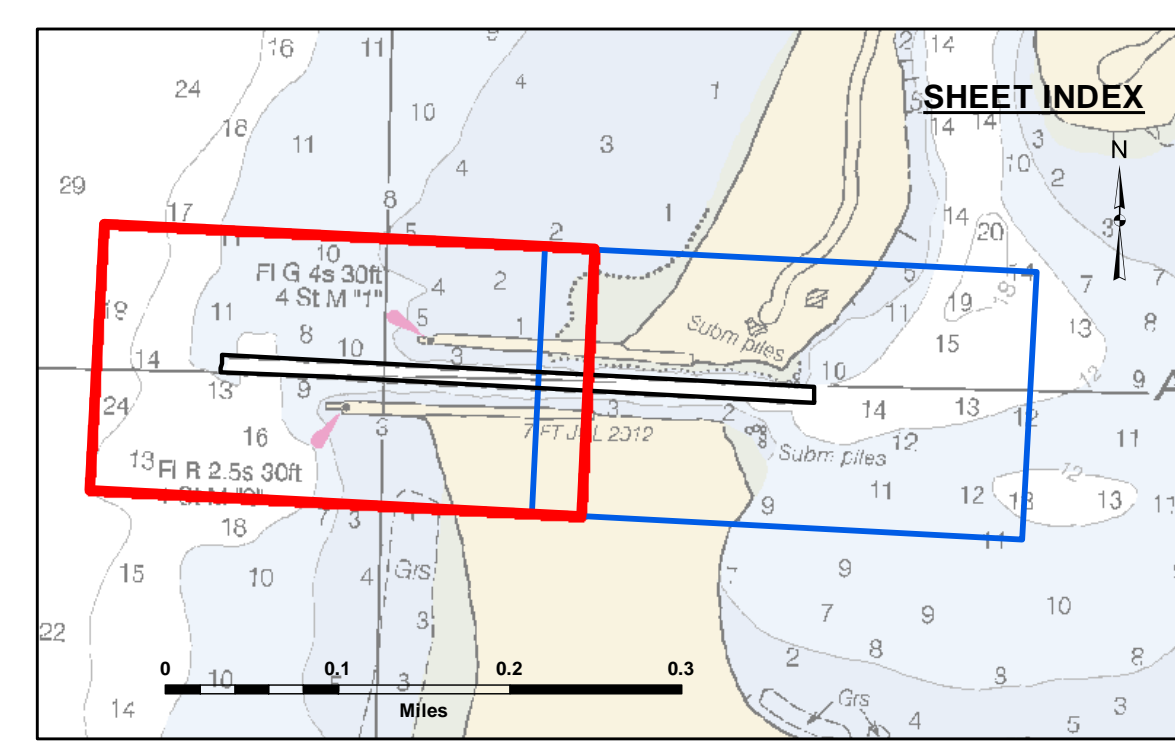




Disclaimer: The data represents the results of data collection and processing for a specific US Army Corps of Engineers activity and indicates the general existing conditions. The user is responsible for the accuracy, completeness, and reliability of the data for other than its intended purpose. The user is responsible for the accuracy, completeness, and reliability of the data for other than its intended purpose. These data are provided as a service to the user and are not intended to be used for any purpose other than that for which they were collected. The user is responsible for the accuracy, completeness, and reliability of the data for other than its intended purpose. These data are provided as a service to the user and are not intended to be used for any purpose other than that for which they were collected.

U.S. ARMY CORPS OF ENGINEERS
DETROIT DISTRICT

Submitted By: _____
Reviewed By: _____
Checked By: _____

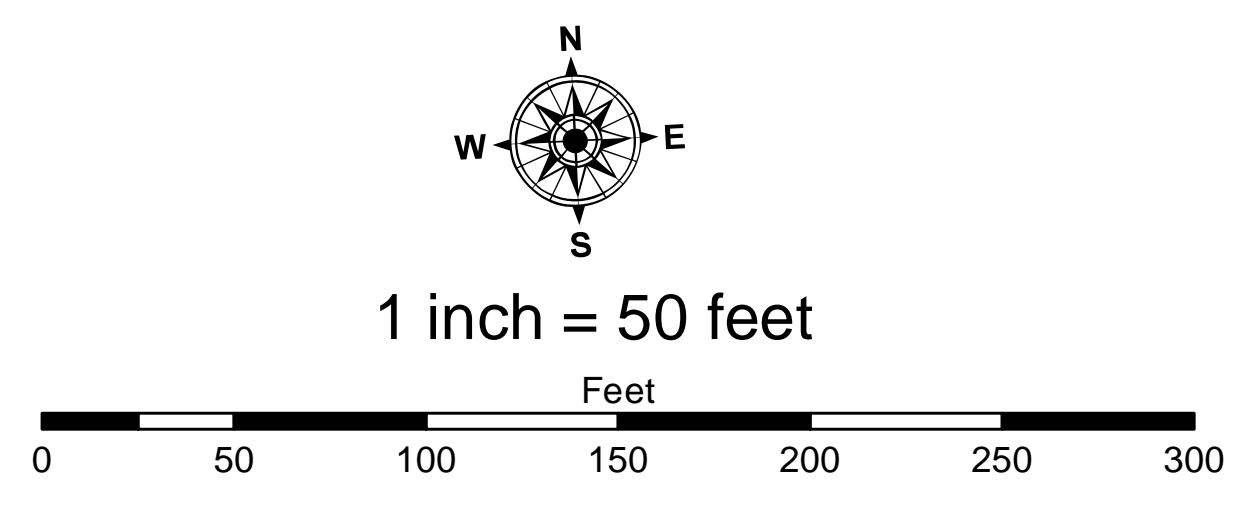


LEGEND

- Cable Submarine
- - - Cable Overhead
- ▭ Channel Limits
- ⊥ Beacon, General
- Contour Lines

SOUNDING LEGEND

- LESS THAN PROJECT DEPTH
- PROJECT DEPTH
- PROJECT DEPTH +1'
- PROJECT DEPTH +2'
- PROJECT DEPTH +3'
- PROJECT DEPTH +4'
- PROJECT DEPTH +5'



NOTES:

1. ALL SOUNDINGS ARE REFERENCED TO I.G.L.D. 1985 FOR LAKE MICHIGAN, ELEVATION 577.5 FT. ABOVE MEAN SEA LEVEL AT RIMOUSKI, QUEBEC.
2. GRID SYSTEM BASED ON LAMBERT PROJECTION, MICHIGAN STATE PLANE COORDINATE SYSTEM, CENTRAL ZONE (2113) 1983 NORTH AMERICAN DATUM, U.S. FOOT. WATER LEVEL READINGS ARE FROM A GAGE MARK LOCATED ON A STEEL PILING IN ARCADIA HARBOR, MI.
3. THE INFORMATION DEPICTED ON THIS MAP REPRESENTS THE RESULTS OF SURVEYS MADE ON DATES INDICATED AND CAN ONLY BE CONSIDERED AS INDICATING THE GENERAL CONDITIONS PRESENT AT THE TIME.
4. POSITIONING METHOD: TRIMBLE DGPS
EQUIPMENT: ODOM CV 100 SINGLEBEAM ECHOSOUNDER
SOFTWARE: HYPACK
VESSEL: LAUNCH 3064
5. GRID COORDINATES ARE BASED ON THE MICHIGAN STATE PLANE COORDINATE SYSTEM, LAMBERT PROJECTION, MICHIGAN CENTRAL ZONE (2112), NORTH AMERICAN DATUM (NAD83).
6. UNLESS OTHERWISE NOTED PROJECT DEPTH IS 9 FEET BELOW LWD

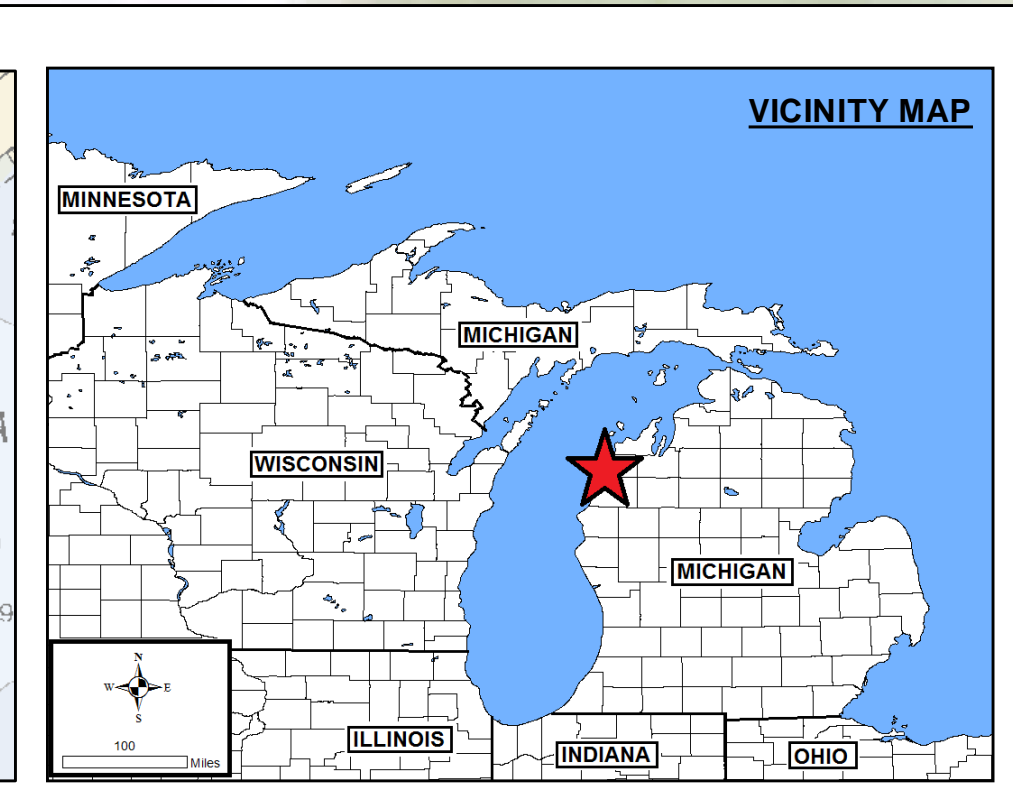
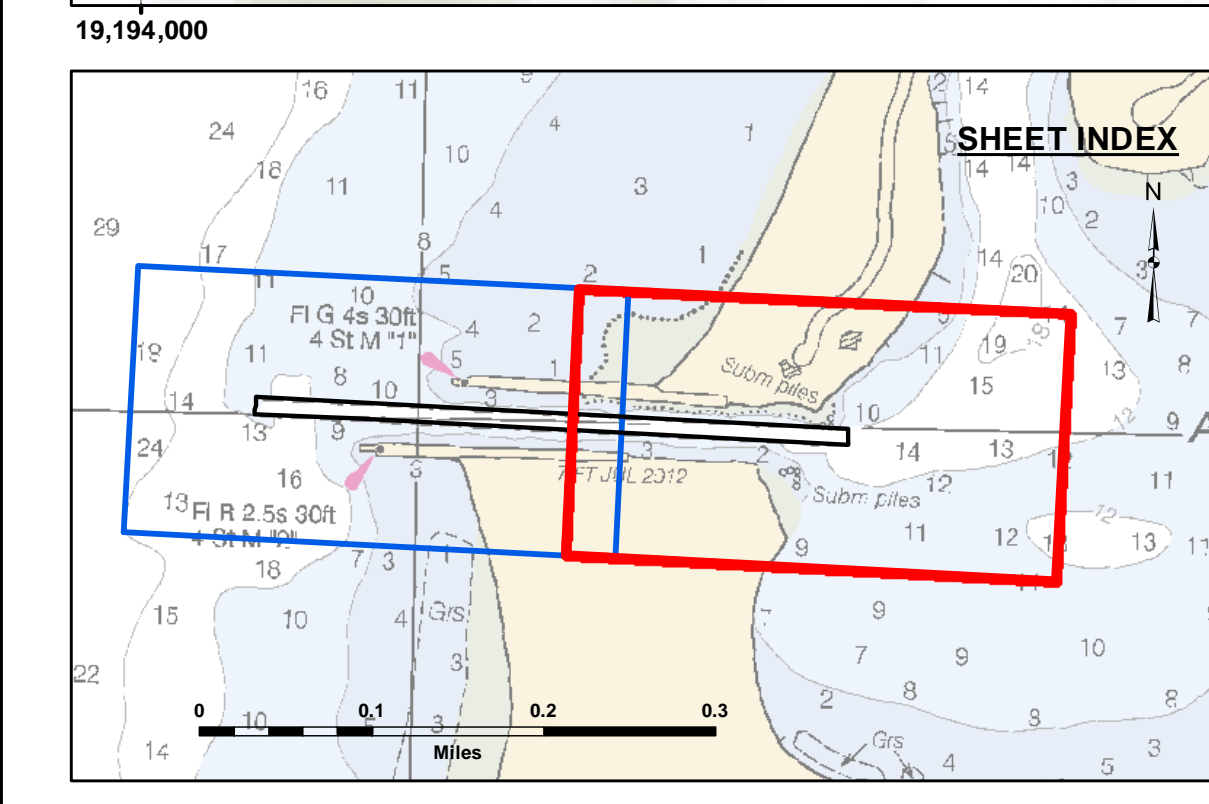
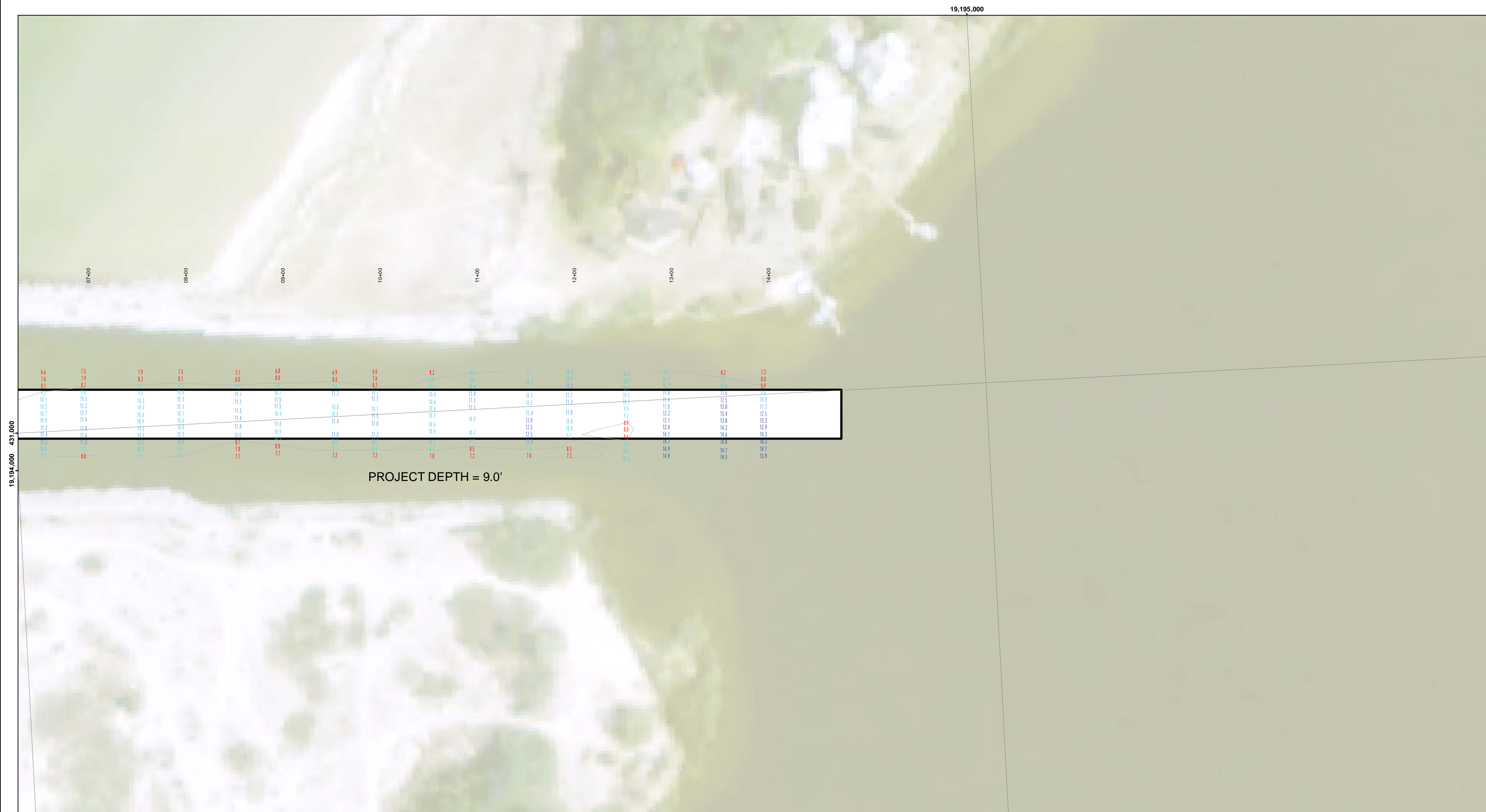
2010 AERIAL PHOTOGRAPHY DATA SOURCE: USGS
** SHALLOWEST SOUNDING PER QUARTER PER REACH.

Arcadia Harbor, MI
Arcadia Harbor
AC_01_DIA_20221003_CS
03 October 2022

Sheet Reference Number
1 of 2

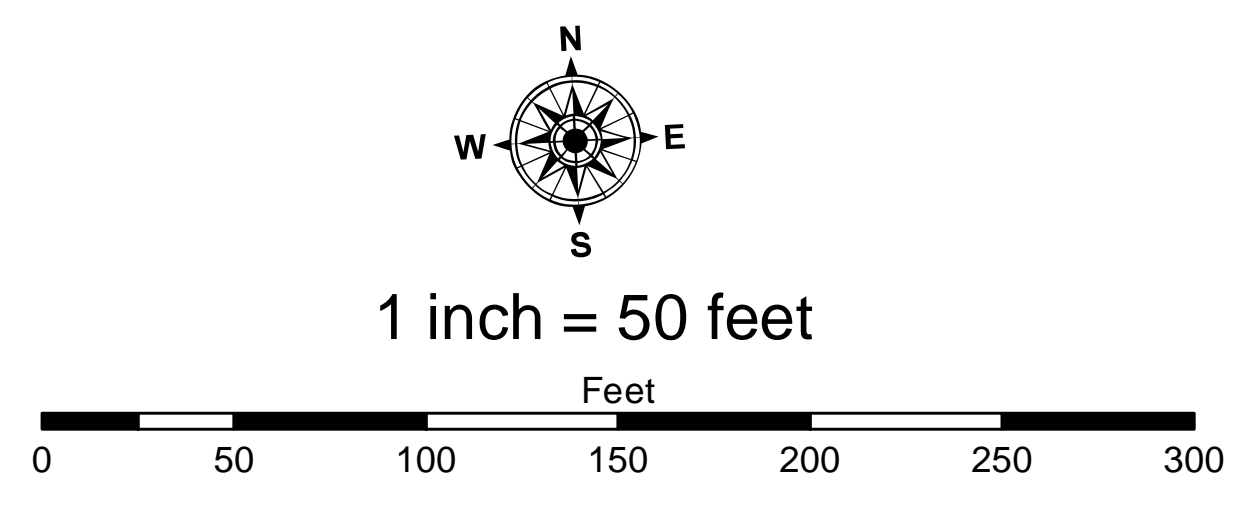


Disclaimer: The data represents the results of data collection and processing for a specific US Army Corps of Engineers activity and indicates the general existing conditions. The user is responsible for the accuracy, completeness, and reliability of the data for other than its intended purpose. The user is responsible for the accuracy, completeness, and reliability of the data for other than its intended purpose. These data are provided as a service to the user and are not intended to be used for any purpose other than that for which they were collected. The user is responsible for the accuracy, completeness, and reliability of the data for other than its intended purpose. These data are provided as a service to the user and are not intended to be used for any purpose other than that for which they were collected.



- LEGEND**
- Cable Submarine
 - - - Cable Overhead
 - ▭ Channel Limits
 - ⊥ Beacon, General
 - Contour Lines

- SOUNDING LEGEND**
- LESS THAN PROJECT DEPTH
 - PROJECT DEPTH
 - PROJECT DEPTH +1'
 - PROJECT DEPTH +2'
 - PROJECT DEPTH +3'
 - PROJECT DEPTH +4'
 - PROJECT DEPTH +5'



- NOTES:**
1. ALL SOUNDINGS ARE REFERENCED TO I.G.L.D. 1985 FOR LAKE MICHIGAN, ELEVATION 577.5 FT. ABOVE MEAN SEA LEVEL AT RIMOUSKI, QUEBEC.
 2. GRID SYSTEM BASED ON LAMBERT PROJECTION, MICHIGAN STATE PLANE COORDINATE SYSTEM, CENTRAL ZONE (2113) 1983 NORTH AMERICAN DATUM. U.S. FOOT WATER LEVEL READINGS ARE FROM A GAGE MARK LOCATED ON A STEEL PILING IN ARCADIA HARBOR, MI.
 3. THE INFORMATION DEPICTED ON THIS MAP REPRESENTS THE RESULTS OF SURVEYS MADE ON DATES INDICATED AND CAN ONLY BE CONSIDERED AS INDICATING THE GENERAL CONDITIONS PRESENT AT THE TIME.
 4. POSITIONING METHOD: TRIMBLE DGPS
EQUIPMENT: ODOM CV 100 SINGLEBEAM ECHOSOUNDER
SOFTWARE: HYPACK
VESSEL: LAUNCH 3064
 5. GRID COORDINATES ARE BASED ON THE MICHIGAN STATE PLANE COORDINATE SYSTEM, LAMBERT PROJECTION, MICHIGAN CENTRAL ZONE (2112), NORTH AMERICAN DATUM (NAD83).
 6. UNLESS OTHERWISE NOTED PROJECT DEPTH IS 9 FEET BELOW LWD
- 2010 AERIAL PHOTOGRAPHY DATA SOURCE: USGS
** SHORTEST SOUNDING PER QUARTER PER REACH.

U.S. ARMY CORPS OF ENGINEERS
DETROIT DISTRICT

Submitted:	Surveyed By:
Recommended:	Plotted By:
Approved:	Checked By:

Chief, Survey Section
Chief, Technical Services

Arcadia Harbor, MI
Arcadia Harbor
AC_01_DIA_20221003_CS
03 October 2022

Sheet Reference Number
2 of 2