

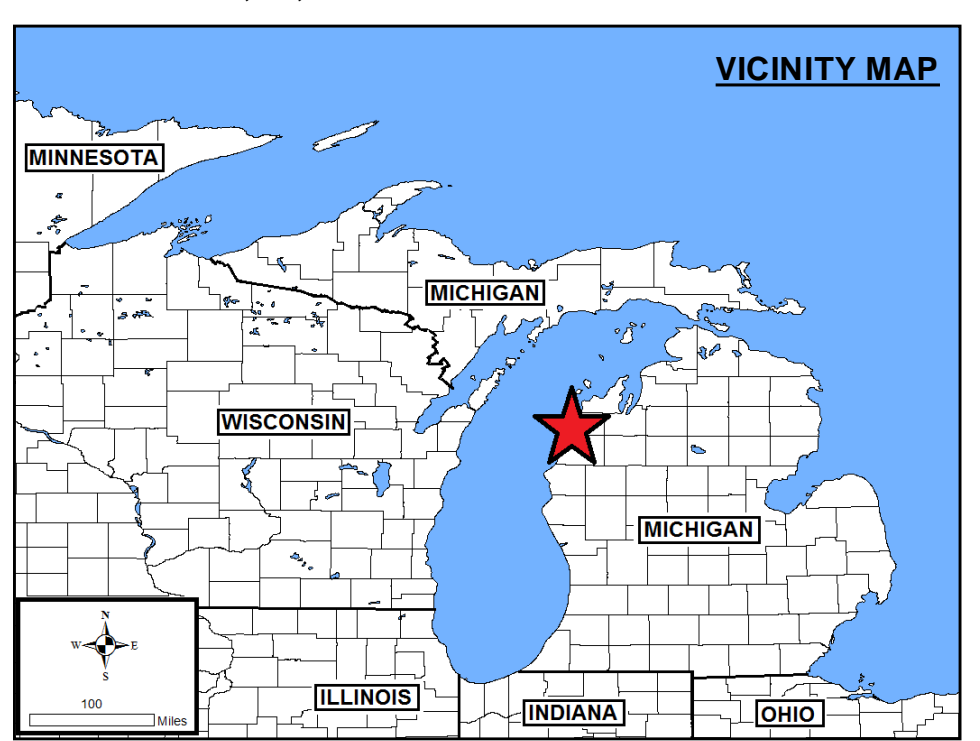
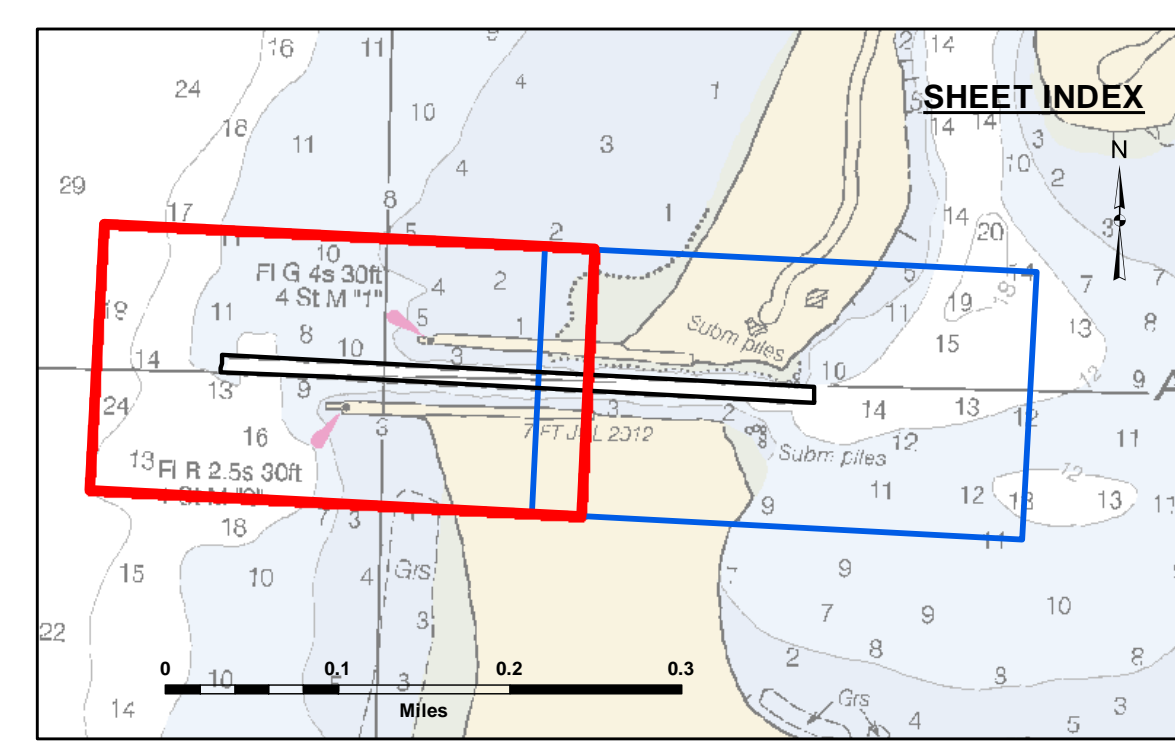


**Disclaimer:** The data represents the results of data collection and processing for a specific US Army Corps of Engineers activity and indicates the general existing conditions. Engineers assume no liability for the accuracy, completeness, readability, usability, or suitability for any particular purpose of the data. The user is responsible for the accuracy, completeness, readability, usability, or suitability for any particular purpose of the data. These data belong to the Government. Therefore, the Government provides this data for other than its intended purpose. These data to others without also transferring this Disclaimer.

U.S. ARMY CORPS OF ENGINEERS  
DETROIT DISTRICT

Submitted By: \_\_\_\_\_  
Reviewed By: Chief, Survey Section  
Approved: Chief, Technical Services

Printed By: \_\_\_\_\_  
Checked By: \_\_\_\_\_

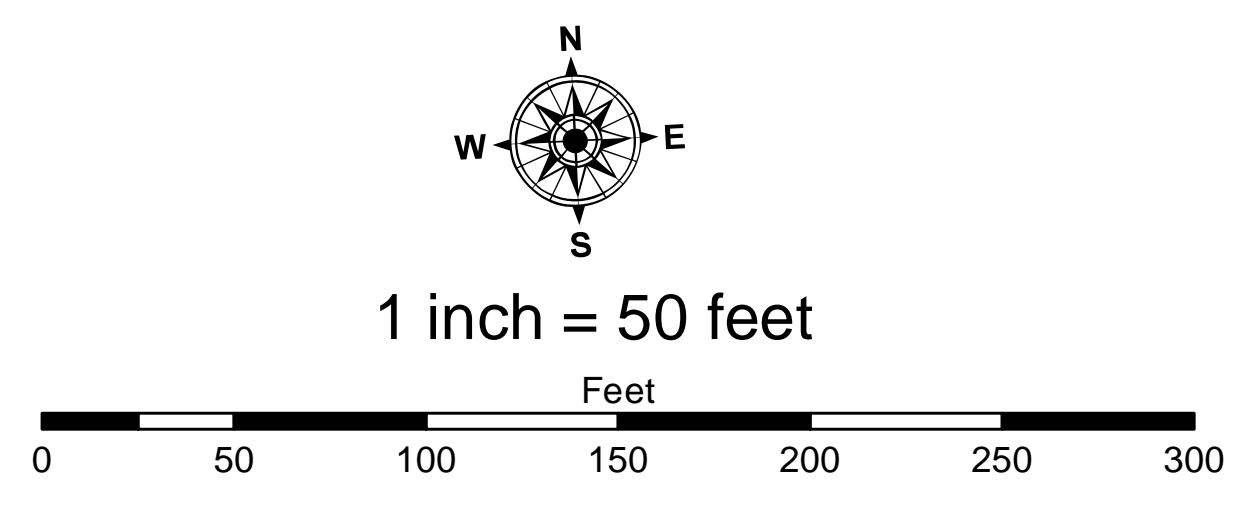


**LEGEND**

- ..... Cable Submarine
- - - Cable Overhead
- ▭ Channel Limits
- ⊥ Beacon, General
- Contour Lines

**SOUNDING LEGEND**

- LESS THAN PROJECT DEPTH
- PROJECT DEPTH
- PROJECT DEPTH +1'
- PROJECT DEPTH +2'
- PROJECT DEPTH +3'
- PROJECT DEPTH +4'
- PROJECT DEPTH +5'



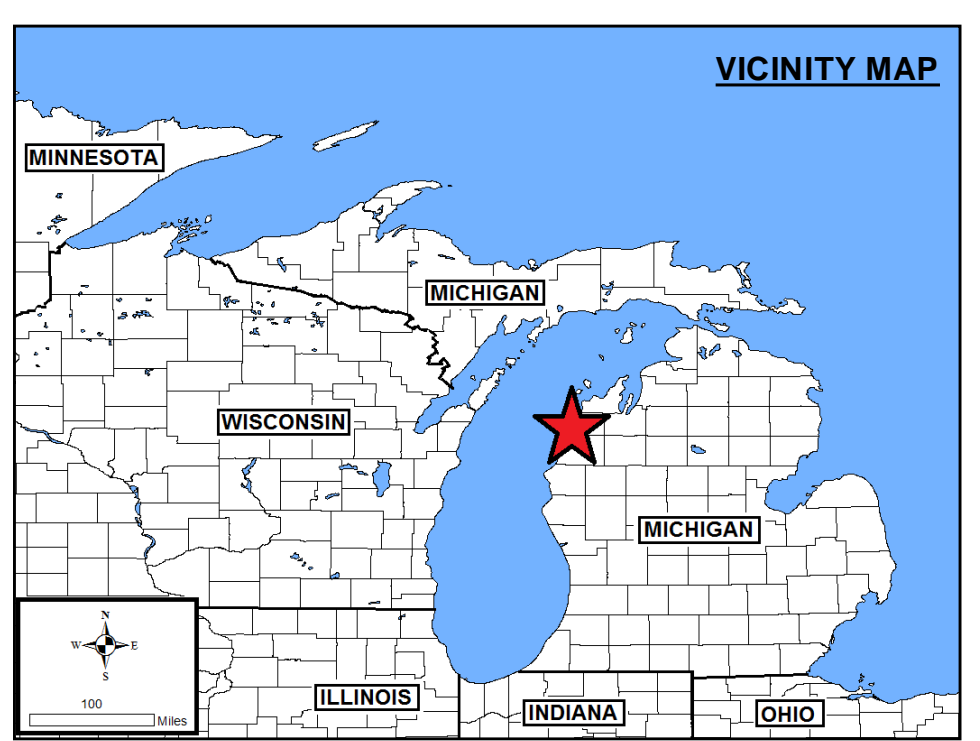
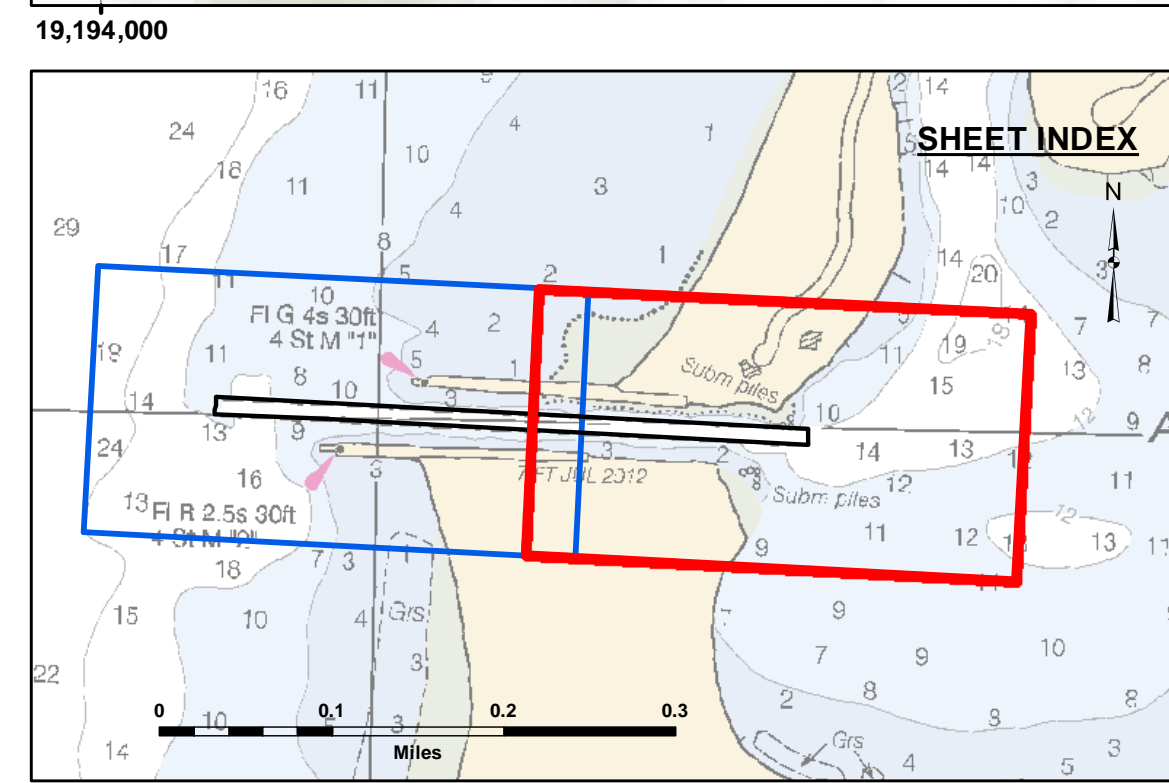
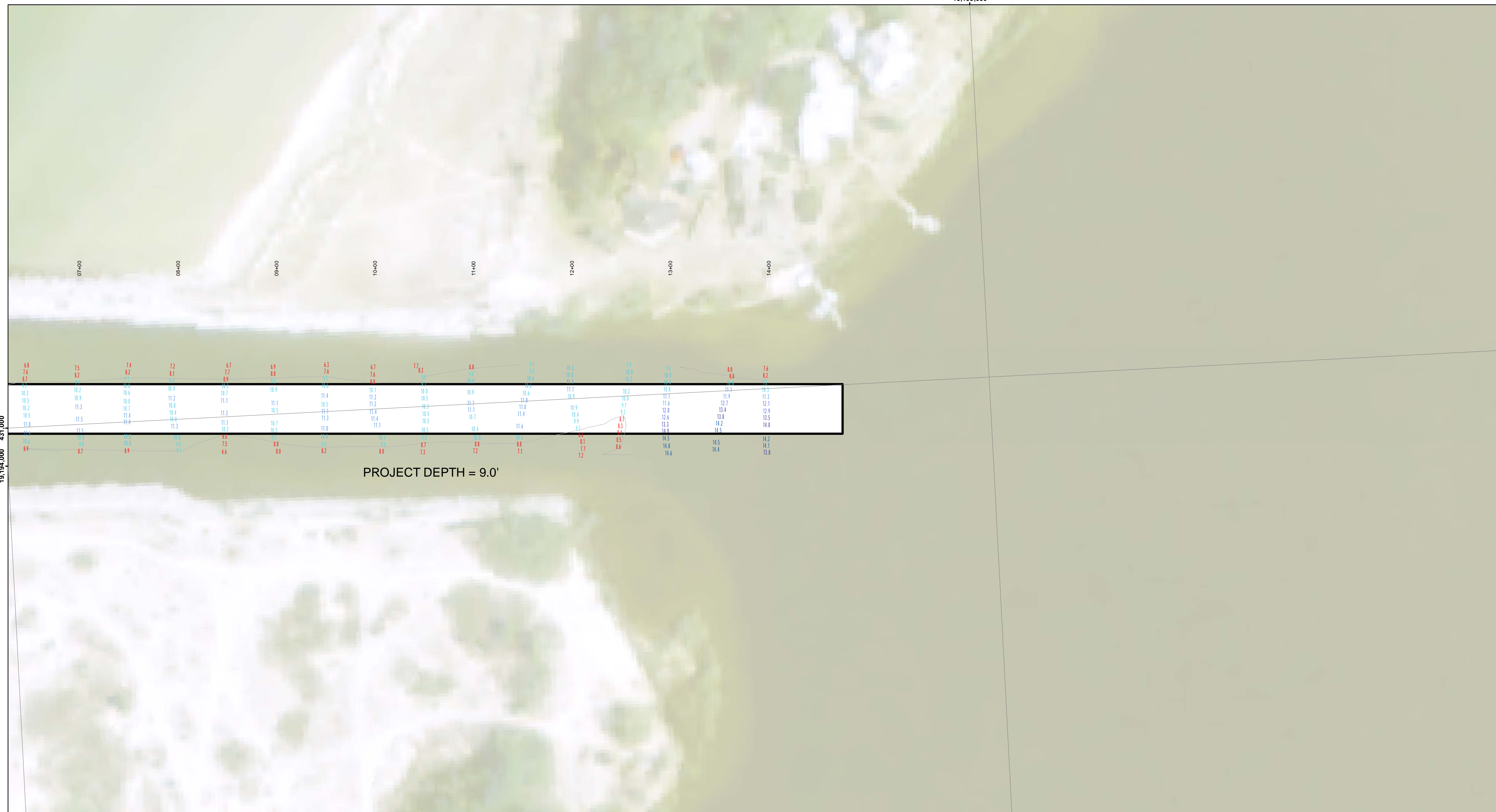
**NOTES:**

1. ALL SOUNDINGS ARE REFERENCED TO I.G.L.D. 1985 FOR LAKE MICHIGAN, ELEVATION 577.5 FT. ABOVE MEAN SEA LEVEL AT RIMOUSKI, QUEBEC.
2. GRID SYSTEM BASED ON LAMBERT PROJECTION, MICHIGAN STATE PLANE COORDINATE SYSTEM, CENTRAL ZONE (2113) 1983 NORTH AMERICAN DATUM, U.S. FOOT. WATER LEVEL READINGS ARE FROM A GAGE MARK LOCATED ON A STEEL PILING IN ARCADIA HARBOR, MI.
3. THE INFORMATION DEPICTED ON THIS MAP REPRESENTS THE RESULTS OF SURVEYS MADE ON DATES INDICATED AND CAN ONLY BE CONSIDERED AS INDICATING THE GENERAL CONDITIONS PRESENT AT THE TIME.
4. POSITIONING METHOD: TRIMBLE DGPS  
EQUIPMENT: ODOM CV 100 SINGLEBEAM ECHOSOUNDER  
SOFTWARE: HYPACK  
VESSEL: LAUNCH 3064
5. GRID COORDINATES ARE BASED ON THE MICHIGAN STATE PLANE COORDINATE SYSTEM, LAMBERT PROJECTION, MICHIGAN CENTRAL ZONE (2112), NORTH AMERICAN DATUM (NAD83).
6. UNLESS OTHERWISE NOTED PROJECT DEPTH IS 9 FEET BELOW LWD

2010 AERIAL PHOTOGRAPHY DATA SOURCE: USGS

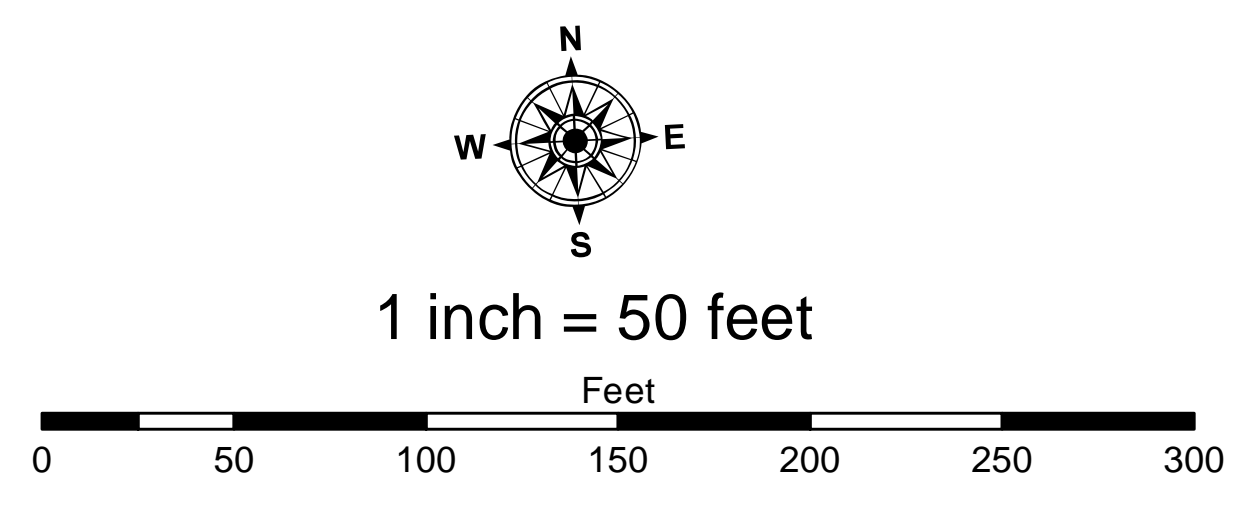
Arcadia Harbor, MI  
Arcadia Harbor  
AC\_01\_DIA\_20210517\_CS  
17 May 2021

Sheet Reference Number  
1 of 2



- LEGEND**
- ..... Cable Submarine
  - - - Cable Overhead
  - ▭ Channel Limits
  - ⊥ Beacon, General
  - Contour Lines

- SOUNDING LEGEND**
- LESS THAN PROJECT DEPTH
  - PROJECT DEPTH
  - PROJECT DEPTH +1'
  - PROJECT DEPTH +2'
  - PROJECT DEPTH +3'
  - PROJECT DEPTH +4'
  - PROJECT DEPTH +5'



- NOTES:**
1. ALL SOUNDINGS ARE REFERENCED TO I.G.L.D. 1985 FOR LAKE MICHIGAN, ELEVATION 577.5 FT. ABOVE MEAN SEA LEVEL AT RIMOUSKI, QUEBEC.
  2. GRID SYSTEM BASED ON LAMBERT PROJECTION, MICHIGAN STATE PLANE COORDINATE SYSTEM, CENTRAL ZONE (2113) 1983 NORTH AMERICAN DATUM, U.S. FOOT. WATER LEVEL READINGS ARE FROM A GAGE MARK LOCATED ON A STEEL PILING IN ARCADIA HARBOR, MI.
  3. THE INFORMATION DEPICTED ON THIS MAP REPRESENTS THE RESULTS OF SURVEYS MADE ON DATES INDICATED AND CAN ONLY BE CONSIDERED AS INDICATING THE GENERAL CONDITIONS PRESENT AT THE TIME.
  4. POSITIONING METHOD: TRIMBLE DGPS  
EQUIPMENT: ODOM OY 100 SINGLEBEAM ECHOSOUNDER  
SOFTWARE: HYPACK  
VESSEL: LAUNCH 3064
  5. GRID COORDINATES ARE BASED ON THE MICHIGAN STATE PLANE COORDINATE SYSTEM, LAMBERT PROJECTION, MICHIGAN CENTRAL ZONE (2112), NORTH AMERICAN DATUM (NAD83).
  6. UNLESS OTHERWISE NOTED PROJECT DEPTH IS 9 FEET BELOW LWD
- 2010 AERIAL PHOTOGRAPHY DATA SOURCE: USGS



**Disclaimer:** The data represents the results of data collection and processing for a specific US Army Corps of Engineers activity and indicates the general existing conditions. Engineers assume no liability for the accuracy, completeness, or implied warranty of the data for other than its intended purpose. The user is responsible for the accuracy of the data for any application of the data for other than its intended purpose.

**Access Constraints:** The United States Government furnishes these data and the recipient accepts and uses them with the express understanding that they are not to be distributed, reproduced, expressed, or implied concerning the accuracy, completeness, readability, usability, or suitability for any particular purpose of the user. These data belong to the Government. Therefore the recipient may not transfer, disseminate, or otherwise use these data for other than the intended purpose.

U.S. ARMY CORPS OF ENGINEERS DETROIT DISTRICT		
Submitted:	Surveyed By:	
Recommended:	Plotted By:	
Approved:	Chief, Technical Services	

Arcadia Harbor, MI  
Arcadia Harbor  
AC\_01\_DIA\_20210517\_CS  
17 May 2021

Sheet Reference Number  
2 of 2