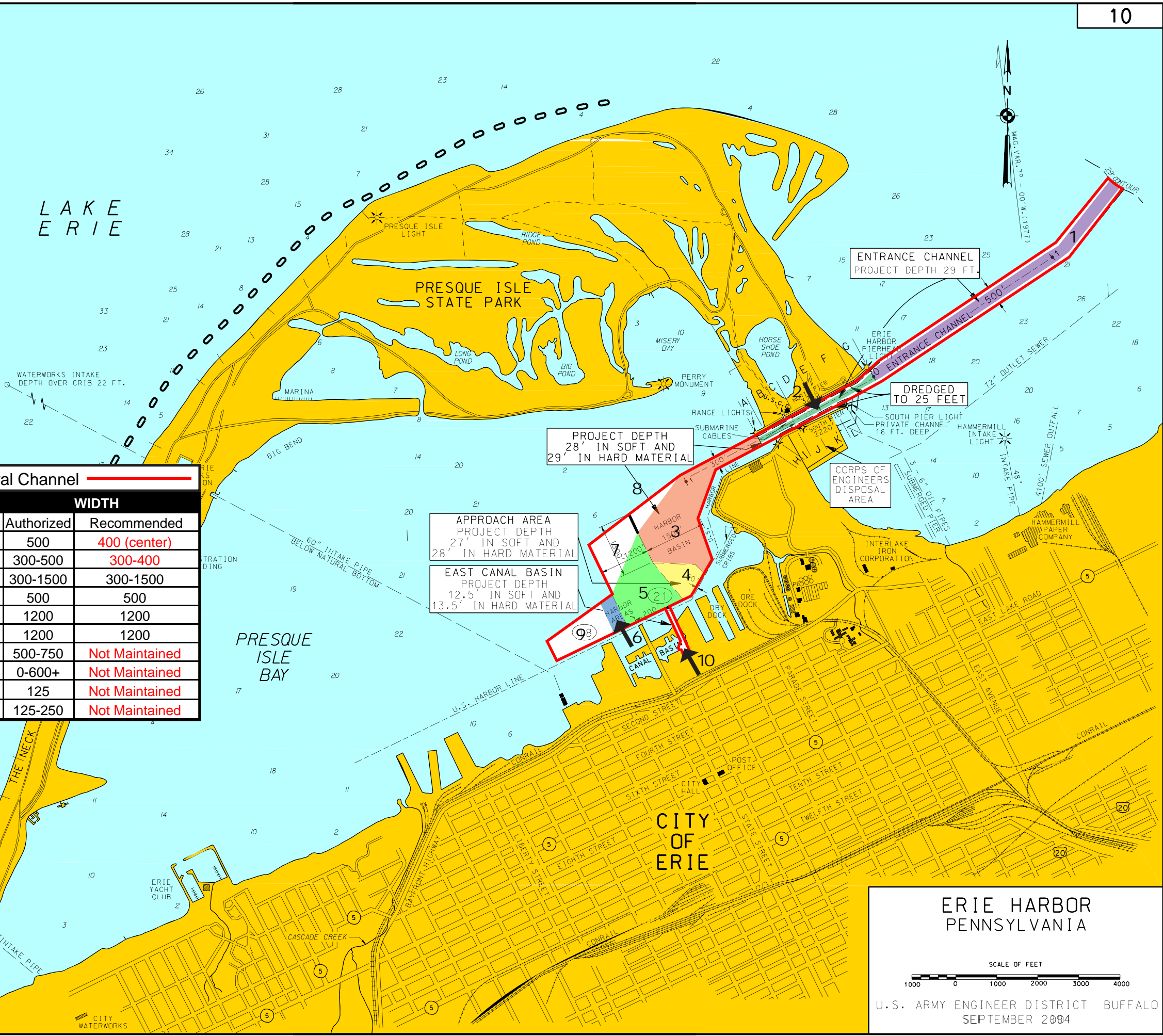


NOTES

PROJECT DEPTHS AND SOUNDINGS ARE REFERRED TO LOW WATER DATUM EL. 569.2 FEET ABOVE MEAN WATER LEVEL AT RIMOUSKI, QUEBEC (IGLD 1985) (INTERNATIONAL GREAT LAKES DATUM 1985)

- ↑ 1 MILES ABOVE ERIE HARBOR PIERHEAD LIGHT AT OUTER END OF NORTH PIER
- ⑤ INDICATES STATE ROUTE
- ②⑦ INDICATES U.S. ROUTE
- ②③ INDICATES INNER HARBOR AREA PROJECTS DEPTHS

FOR PRESQUE ISLE PENINSULA BEACH NOURISHMENT AND SHORE PROTECTION PROJECTS, SEE MAP NO. 203 AND 203A.



Authorized Federal Channel				
AREA	DEPTH		WIDTH	
	Authorized	Recommended	Authorized	Recommended
1	29	29	500	400 (center)
2	29	29	300-500	300-400
3	28	29	300-1500	300-1500
4	27	27	500	500
5	21	21	1200	1200
6	18	18	1200	1200
7	21	Not Maintained	500-750	Not Maintained
8	28	Not Maintained	0-600+	Not Maintained
9	18	Not Maintained	125	Not Maintained
10	12.5	Not Maintained	125-250	Not Maintained

PROJECT DEPTH 28' IN SOFT AND 29' IN HARD MATERIAL

ENTRANCE CHANNEL PROJECT DEPTH 29 FT.

DREDGED TO 25 FEET

APPROACH AREA PROJECT DEPTH 27' IN SOFT AND 28' IN HARD MATERIAL

EAST CANAL BASIN PROJECT DEPTH 12.5' IN SOFT AND 13.5' IN HARD MATERIAL

CORPS OF ENGINEERS DISPOSAL AREA

ERIE HARBOR PENNSYLVANIA

