



**US Army Corps  
of Engineers®**

DETROIT DISTRICT

ATTN: CELRE-DE  
477 MICHIGAN AVENUE  
DETROIT MI 48226-2575  
HTTP://WWW.LRE.USACE.ARMY.MIL/

DATE: 09/01/2023

POC: LeighAnn  
Ryckeghem  
(906) 635-3464

NOTICE NUMBER: 203606

LOCAL NUMBER: L23-17  
WATERWAY: LITTLE LAKE HARBOR

EFFECTIVE: 08/30/2023 09:03 thru Until  
Further Notice

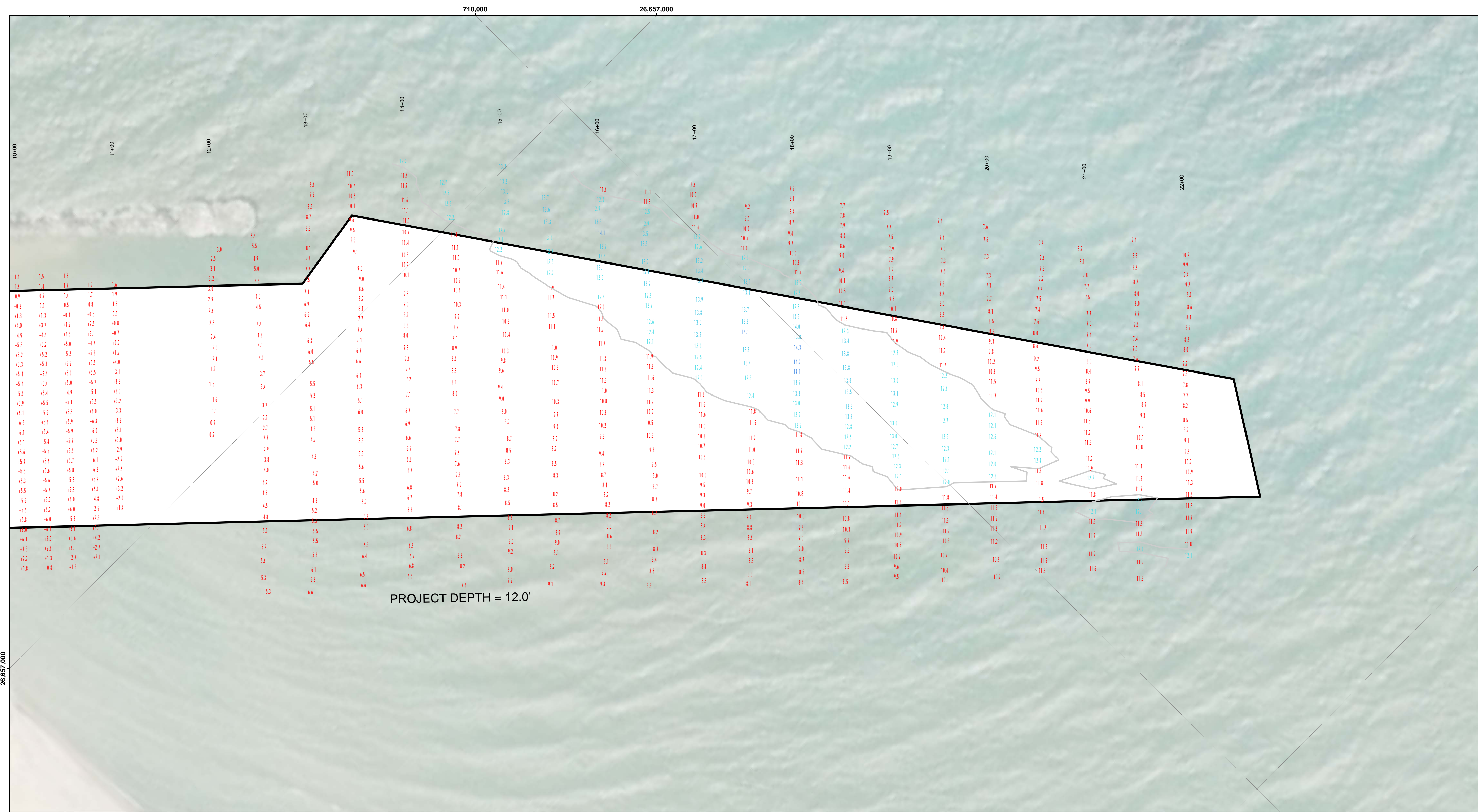
---

**REPORTED SHOALING - LITTLE LAKE HARBOR, MI**

1. Recent project condition surveys at Little Lake Harbor, MI, indicate shoaling in the navigation channel.
  
2. Shoaling is present across the width of the channel throughout project stationing 00+00 to 22+00 with depths ranging from 0 to 19 feet above project depth. Project depth for the navigation channel is authorized to 12.0' below International Great Lakes Datum (IGLD85), Low Water Datum (LWD).
  
3. The most recent project condition survey is attached to this notice. Additionally, the current condition surveys can be found at:
  - a. <https://www.lre.usace.army.mil/Missions/Operations/Little-Lake-Harbor-MI/>
  - b. <https://navigation.usace.army.mil/Survey/Hydro#>
  
4. Questions regarding this notice may be directed to the Soo Operations Manager, LeighAnn Ryckeghem at (906) 635-3464. Our internet address is: <https://www.lre.usace.army.mil.Missions/Operations/>

//signed//

CYNTHIA A. JAREMA  
Chief, Operations & Maintenance  
USACE-Detroit



PROJECT DEPTH = 12.0'

**DISCLAIMER:** The United States Government furnishes these data and the recipient accepts and uses them with the express understanding that the United States Government makes no warranty, expressed or implied, concerning the accuracy, completeness, reliability, usability or suitability for any particular purpose of the data. The recipient may not transfer these data to others without also transferring this disclaimer.

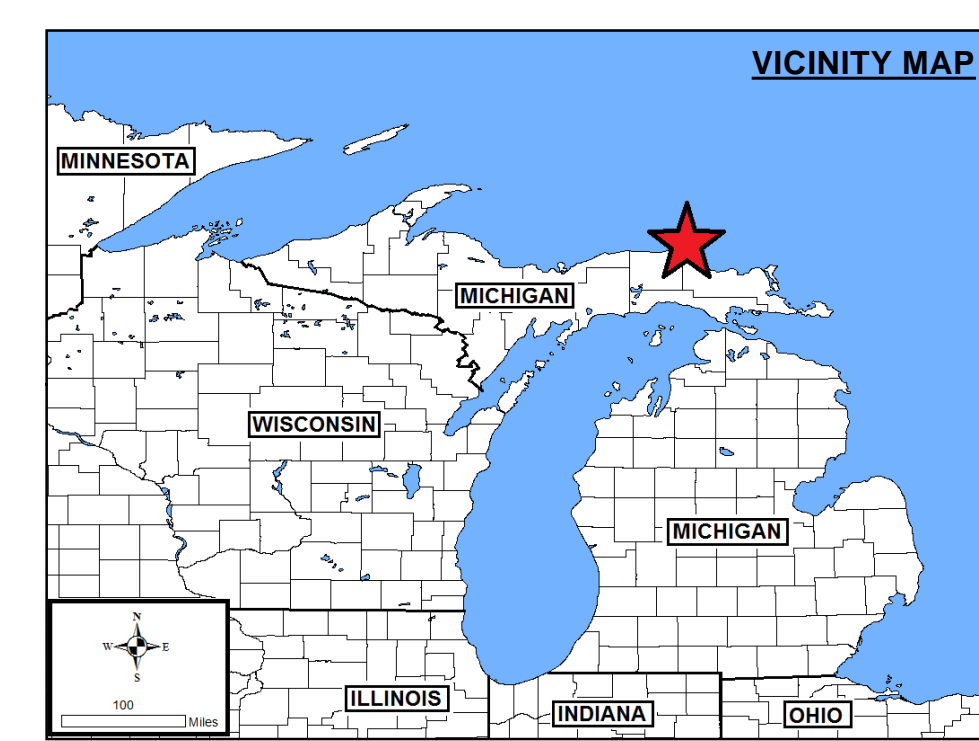
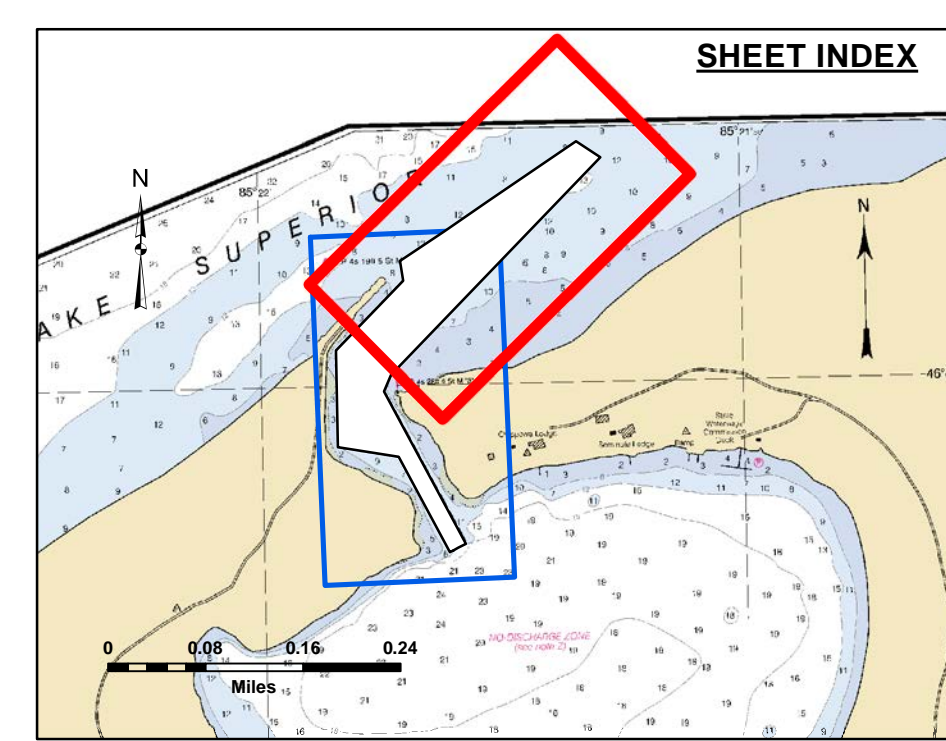
Submitted:	Surveyed By:
Recommended:	Plotted By:
Approved:	Checked By:

U.S. ARMY CORPS OF ENGINEERS  
DETROIT DISTRICT

Little Lake Harbor, MI  
Little Lake Harbor  
LT\_01\_LKE\_20230628\_CS  
28 June 2023

Sheet Reference Number  
1 of 2

Revision Number:  
4.2-310 (MAY 20)

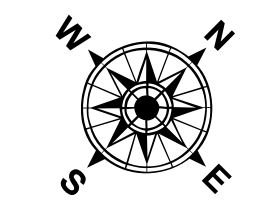


**LEGEND**

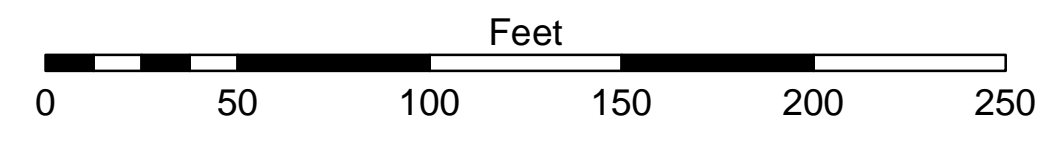
- ..... Cable Submarine
- - - Cable Overhead
- Placement Area
- ⊥ Beacon, General
- Contour Lines
- ▭ Channel Limits

**SOUNDING LEGEND**

- Red: LESS THAN PROJECT DEPTH
- Light Blue: PROJECT DEPTH
- Light Blue: PROJECT DEPTH +1'
- Medium Blue: PROJECT DEPTH +2'
- Dark Blue: PROJECT DEPTH +3'
- Very Dark Blue: PROJECT DEPTH +4'
- Black: PROJECT DEPTH +5'



1 inch = 50 feet



**NOTES:**

1. THE INFORMATION DEPICTED ON THIS MAP REPRESENTS THE RESULTS OF SURVEYS CONDUCTED ON DATE LISTED AND CAN ONLY BE CONSIDERED AS INDICATING THE GENERAL CONDITIONS PRESENT AT THE TIME.
2. ELEVATIONS AND SOUNDING DEPTHS ARE REFERENCED TO INTERNATIONAL GREAT LAKES DATUM 1985 (IGLD 85). LOW WATER DATUM ZERO IS 601.1 FEET ABOVE MEAN WATER LEVEL AT POINT RIMOUSKI QUEBEC. DEPTHS ARE MEASURED USING A TELEDYNE ECHOTRAC E20 SINGLE BEAM ECHOSOUNDER.
3. HORIZONTAL POSITIONING IS DETERMINED USING A TRIMBLE MPS865 GPS RECEIVER WITH OMNISTAR GPS CORRECTIONS.
4. GRID COORDINATES ARE BASED ON THE MICHIGAN STATE PLANE COORDINATE SYSTEM, LAMBERT PROJECTION, MICHIGAN NORTH ZONE (211), NORTH AMERICAN DATUM 1983 (NAD83). ALL COORDINATES SHOWN ARE IN U.S. SURVEY FEET.
5. THE LOCATION OF NAVIGATION AIDS REPRESENT THEIR GENERAL LOCATION AND CANNOT BE CONSIDERED FOR NAVIGATION.
6. PROJECT DEPTH IS 12.0' BELOW LOW WATER DATUM.
7. ELEVATION AND SOUNDINGS ABOVE LOW WATER DATUM ARE SHOWN THUS +2.0. ELEVATION AND SOUNDINGS BELOW LOW WATER DATUM ARE SHOWN THUS 2.0.

IMAGERY SOURCE: ESRI

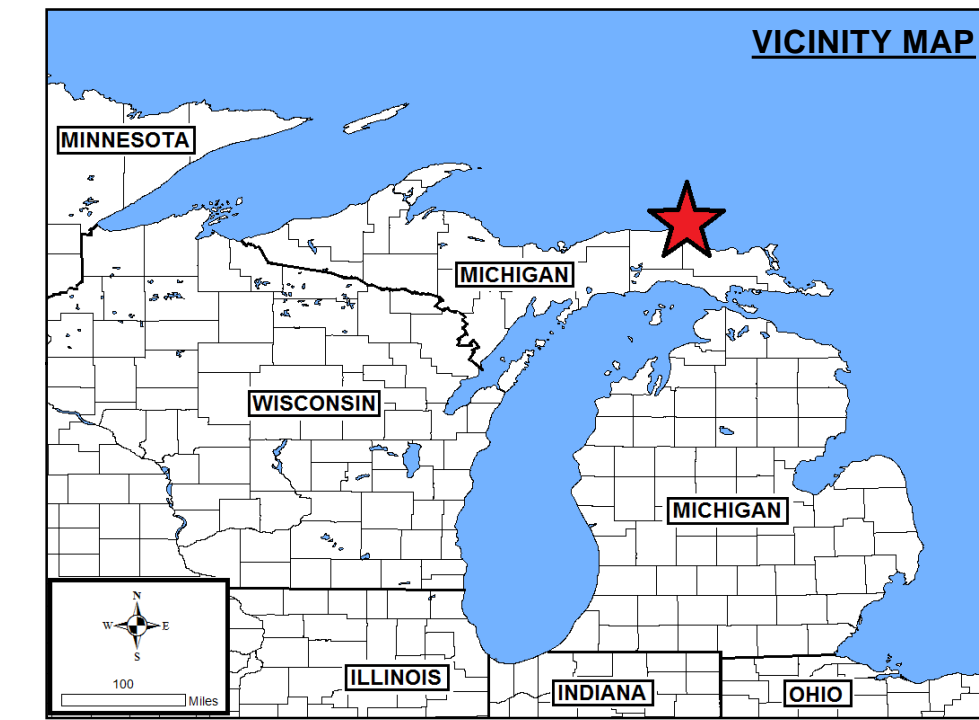
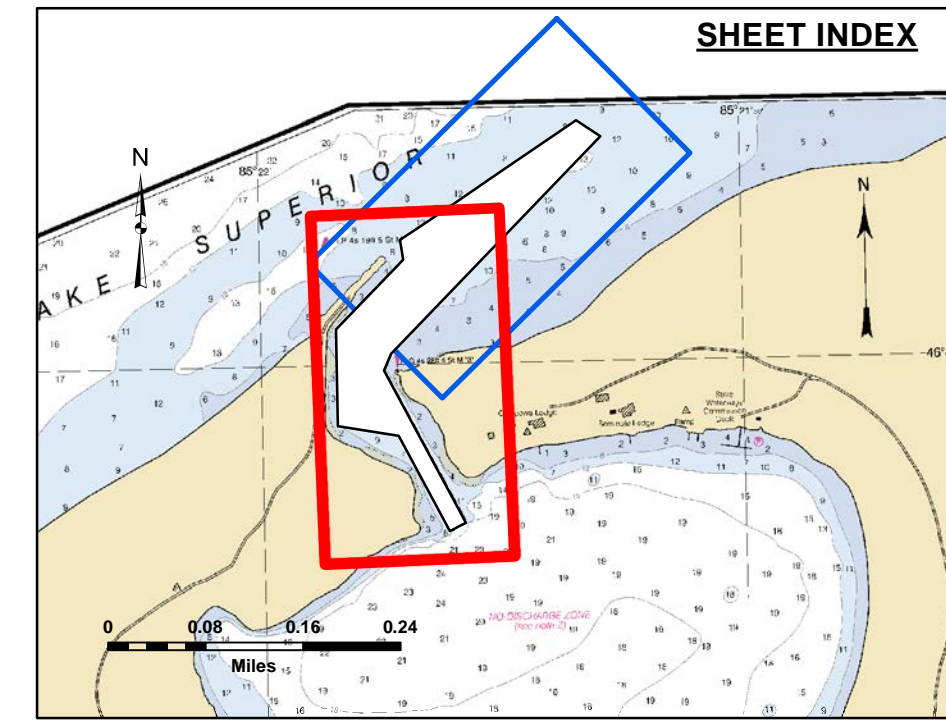


**Disclaimer:** The data represented by the results of data collection processing for a specific US Army Corps of Engineers activity and indicates the general existing conditions. The user is responsible for the results of any of the application of the data for other than its intended purpose.

**DISCLAIMER:** The United States Government furnishes these data and the recipient accepts and uses them with the express understanding that the data are not to be used for any purpose other than that for which they were provided. The recipient may not transfer these data to others without also transferring this Disclaimer.



U.S. ARMY CORPS OF ENGINEERS DETROIT DISTRICT	
Submitted:	Surveyed By:
Recommended:	Plotted By:
Approved:	Checked By:
	Chief, Survey Station
	Chief, Technical Services

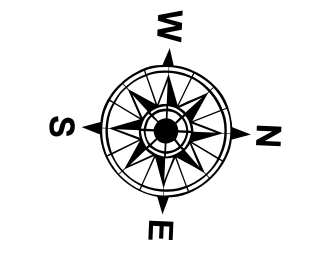


**LEGEND**

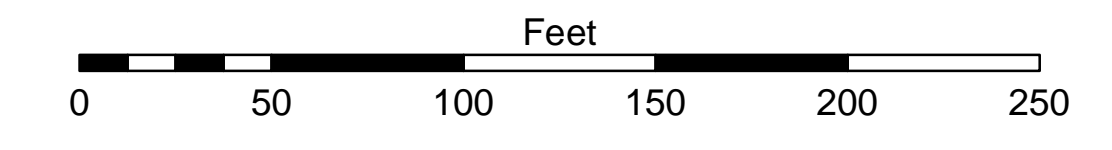
- ..... Cable Submarine
- - - Cable Overhead
- Placement Area
- ⊥ Beacon, General
- Contour Lines
- ▭ Channel Limits

**SOUNDING LEGEND**

- Red: LESS THAN PROJECT DEPTH
- Light Blue: PROJECT DEPTH
- Light Green: PROJECT DEPTH +1'
- Light Blue-Green: PROJECT DEPTH +2'
- Light Blue: PROJECT DEPTH +3'
- Medium Blue: PROJECT DEPTH +4'
- Dark Blue: PROJECT DEPTH +5'



1 inch = 50 feet



**NOTES:**

1. THE INFORMATION DEPICTED ON THIS MAP REPRESENTS THE RESULTS OF SURVEYS CONDUCTED ON DATE LISTED AND CAN ONLY BE CONSIDERED AS INDICATING THE GENERAL CONDITIONS PRESENT AT THE TIME.
2. ELEVATIONS AND SOUNDING DEPTHS ARE REFERENCED TO INTERNATIONAL GREAT LAKES DATUM 1985 (IGLD 85). LOW WATER DATUM ZERO IS 601.1 FEET ABOVE MEAN WATER LEVEL AT POINT RIMOULSKI QUEBEC. DEPTHS ARE MEASURED USING A TELEDYNE ECHOTRAC E20 SINGLE BEAM ECHOSOUNDER.
3. HORIZONTAL POSITIONING IS DETERMINED USING A TRIMBLE MPS865 GPS RECEIVER WITH OMNISTAR GPS CORRECTIONS.
4. GRID COORDINATES ARE BASED ON THE MICHIGAN STATE PLANE COORDINATE SYSTEM, LAMBERT PROJECTION, MICHIGAN NORTH ZONE (211), NORTH AMERICAN DATUM 1983 (NAD83). ALL COORDINATES SHOWN ARE IN U.S. SURVEY FEET.
5. THE LOCATION OF NAVIGATION AIDS REPRESENT THEIR GENERAL LOCATION AND CANNOT BE CONSIDERED FOR NAVIGATION.
6. PROJECT DEPTH IS 12.0' BELOW LOW WATER DATUM.
7. ELEVATION AND SOUNDINGS ABOVE LOW WATER DATUM ARE SHOWN THUS +2.0. ELEVATION AND SOUNDINGS BELOW LOW WATER DATUM ARE SHOWN THUS 2.0.

IMAGERY SOURCE: ESRI

Little Lake Harbor, MI  
Little Lake Harbor  
LT\_01\_LKE\_20230628\_CS  
28 June 2023

Sheet Reference Number  
2 of 2