

NOTICE TO NAVIGATION INTERESTS

DETROIT DISTRICT

DATE: 03/21/2023

NOTICE NUMBER: 202333

ATTN: CELRE-DE
477 MICHIGAN AVENUE
DETROIT MI 48226-2575
HTTP://WWW.LRE.USACE.ARMY.MIL/

POC: LeighAnn
Ryckeghem
(906) 635-3464

LOCAL NUMBER: L23-02
WATERWAY: ST. MARYS RIVER

EFFECTIVE: 03/25/2023 00:01 thru
01/15/2024 23:59

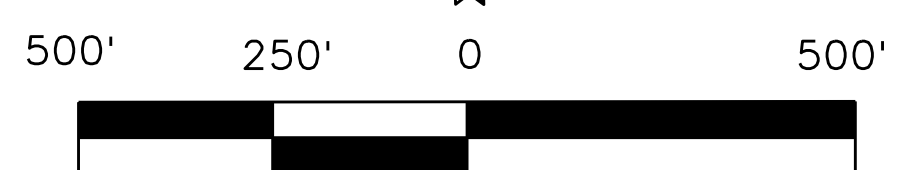
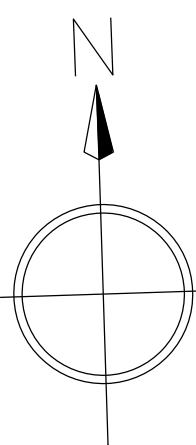
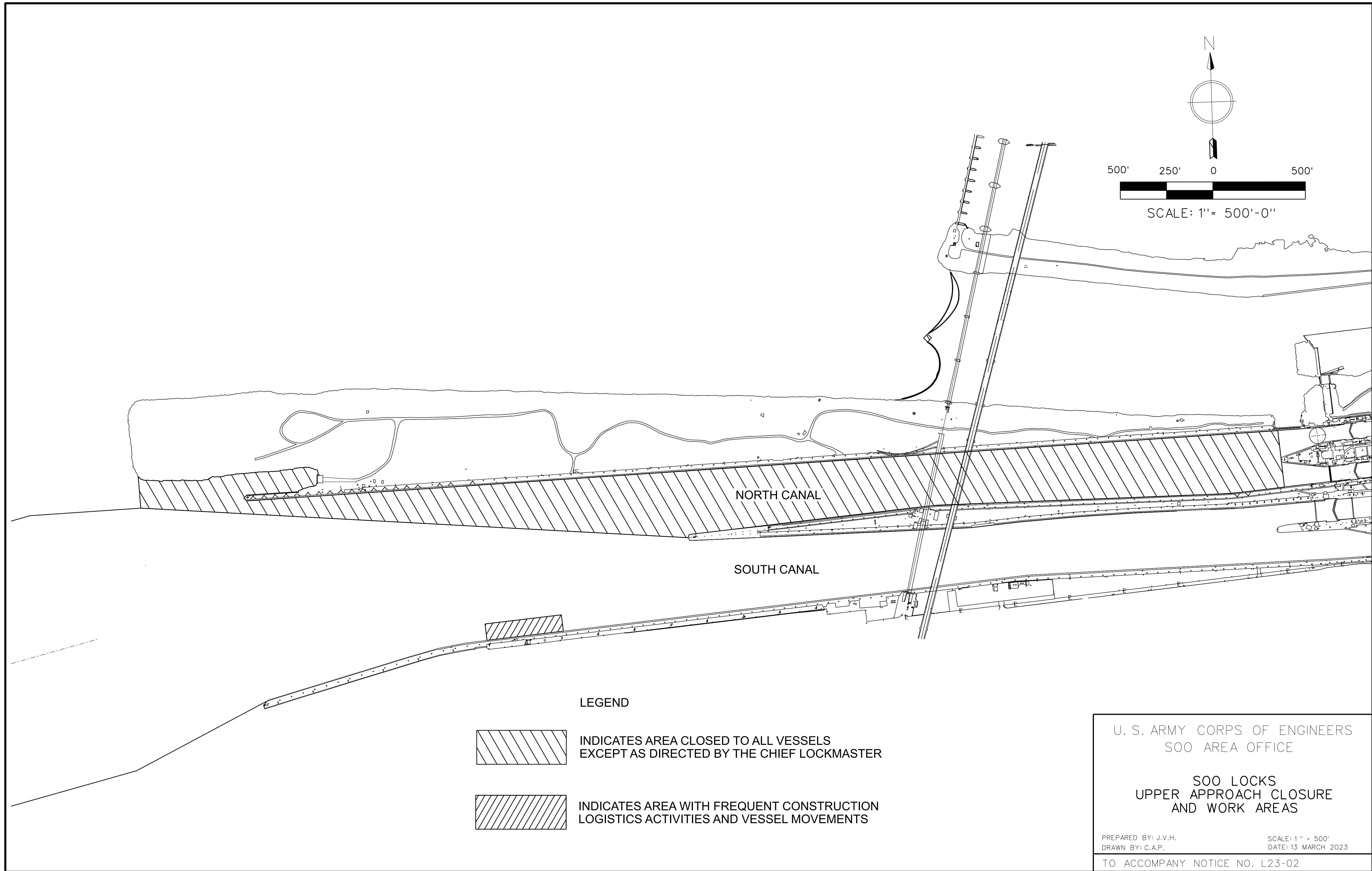
OPERATIONAL STATUS

SOO LOCKS WEST APPROACH NORTH CANAL CLOSURE AND SOUTH CANAL WORK AREAS

1. Ongoing construction activities are occurring at the St. Marys Falls North Canal, necessitating closure of the West approach. This area is closed to all vessel traffic except at the specific direction of the Chief Lockmaster. This area is identified with wide hatching on the attached chartlet.
2. This closure will remain in effect through January 15, 2024.
3. Frequent construction logistics activities will occur along Southwest Pier, including material barge movements and personnel transportation. Vessel traffic location and movements will be coordinated at the direction of the Chief Lockmaster. This area is identified with narrow hatching on the attached chartlet.
4. Questions regarding this notice may be directed to the Soo Operations Manager, LeighAnn Ryckeghem at 906-635-3464. Our internet address is: <http://www.lre.usace.army.mil.Missions/Operations.aspx>

//signed//

CYNTHIA A. JAREMA
Chief, Operations & Maintenance Branch
USACE-Detroit

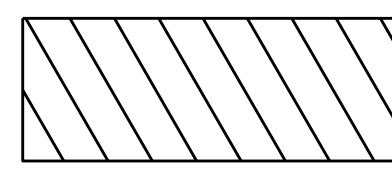


SCALE: 1" = 500'-0"

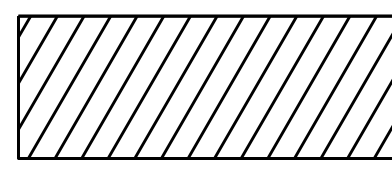
NORTH CANAL

SOUTH CANAL

LEGEND



INDICATES AREA CLOSED TO ALL VESSELS EXCEPT AS DIRECTED BY THE CHIEF LOCKMASTER



INDICATES AREA WITH FREQUENT CONSTRUCTION LOGISTICS ACTIVITIES AND VESSEL MOVEMENTS

U. S. ARMY CORPS OF ENGINEERS
SOO AREA OFFICE

SOO LOCKS
UPPER APPROACH CLOSURE
AND WORK AREAS

PREPARED BY: J.V.H.
DRAWN BY: C.A.P.

SCALE: 1" = 500'
DATE: 13 MARCH 2023

TO ACCOMPANY NOTICE NO. L23-02